

**International Conference on Adaptation Metrics and
Techniques for Water, Agriculture and Resilient
Cities, October 26-27, 2018
Advanced Courses, October 24-25, 2018**

Dr. Doaa Amin

Head of Nile Basin Dep.

Water Resources Research Institute (WRRI), NWRC

Content

- The Event Details
- Overview
- The Objectives
- Contents
- Conference Outcomes
- Recommendation

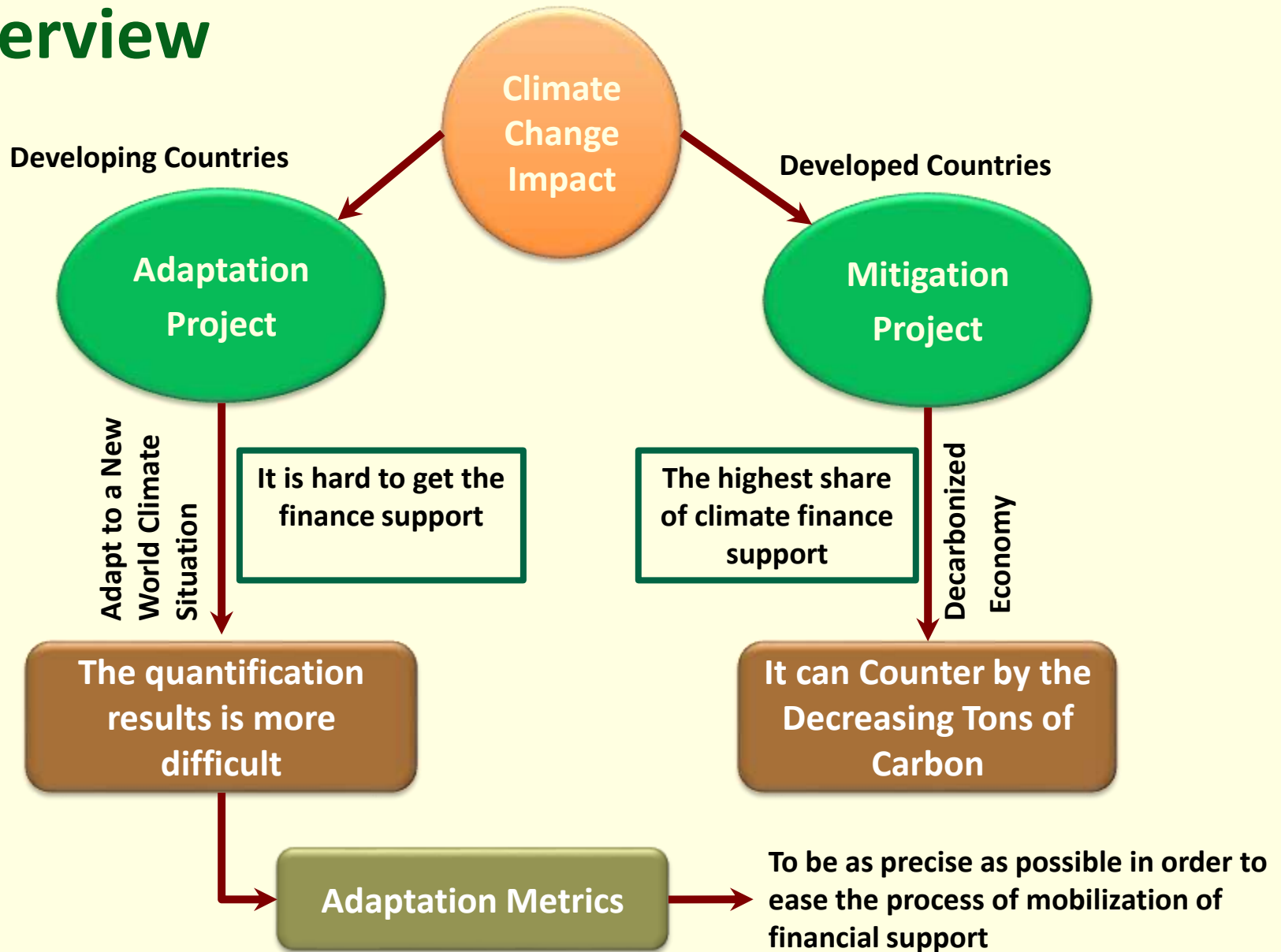


The Event Details

- Subjects:
 1. Advanced Courses/Tutorials within the frame work of the conference
 2. International Conference on “Adaptation Metrics for Agriculture, Water and Resilient Cities
- Duration: (24-27)/October/2018
- Location: Mohamed VI Polytechnic University (UM6P)
Benguerir, Morocco
- Sponsors:

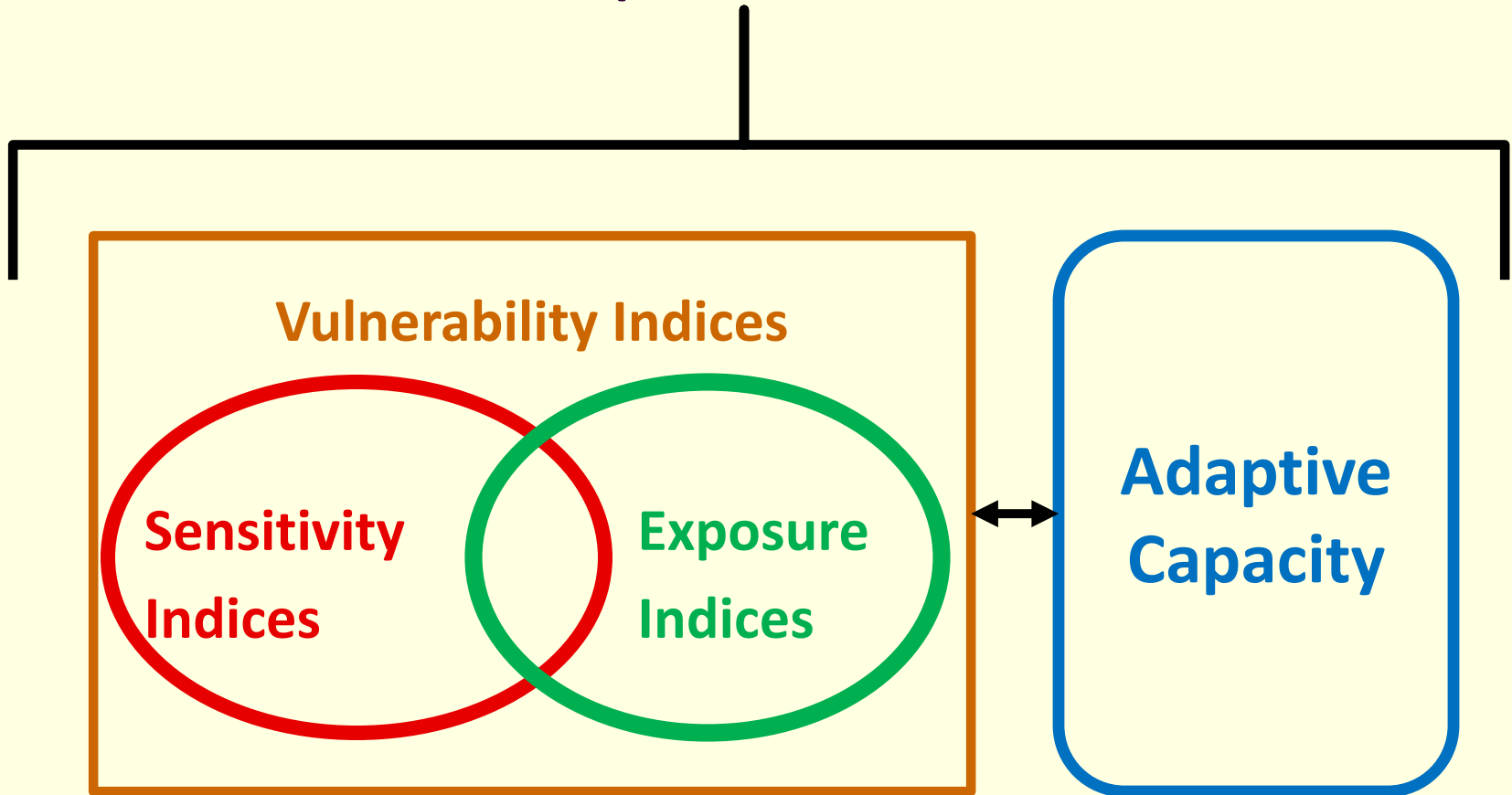


Overview



Overview

Adaptation Metrics



Objectives

- The conference aims to gather researchers, experts, and practitioners from different countries and international organizations to present and discuss the state of the art techniques, metrics and monitoring tools for adaptation in the fields of Water, Agriculture and Resilient Cities.
- The conference focused to Africa and undertake a capacity development needs related to adaptation metrics and monitoring tools in the continent.



Training Contents

- Introduction to the climate change science basis
- Observed and projected impacts of climate change on water resources (with focus on Africa and MENA region)
- Observed and projected impacts of climate change on agriculture (with focus on Africa and MENA region)
- Adaptation in water sector: Overview, needs, techniques and metrics and monitoring tools
- Adaptation of agriculture: Overview, needs, techniques and metrics and monitoring tools
- Climate finance mechanisms and procedures

Conference Contents

- The main outcomes of the IPCC SR on 1.5 degrees (SR 1.5), the adaptation in the context of the IPCC SR 1.5, adaptation metrics and techniques knowledge
- The new findings and challenges related to adaptation metrics and techniques for water agriculture.
- Adaptation aspects related to cities with focus on Water, Agriculture, and disaster risks.
- The new findings and challenges related to adaptation metrics and techniques for resilient cities.



Kind of Metrics

Expected results	GEF's LDCF/SCCF	Adaptation Fund	PPCR
Reduction of vulnerability	Number of direct beneficiaries	Number of beneficiaries	Number of people supported to cope with effects of climate change <i>(Quantitative reporting at the investment plan level)</i>
	Type and extent of assets strengthened and/or better managed to withstand the effects of climate change <i>(ha of land, km of road, km of coast)</i>	Physical infrastructure improved to withstand climate change and variability-induced stress <i>(Scale 5-1 ranging from fully improved to not improved)</i>	
	Population benefiting from the adoption of diversified, climate-resilient livelihood options <i>(number of people, % of females and of targeted population)</i>	Percentage of households and communities having more secure (increased) access to livelihood assets <i>(Scale 5-1 to express level of improvement of access)</i>	Change in percentage of households (in areas at risk) whose livelihoods have improved <i>(optional)</i>
Strengthened institutional and technical capacities	Public awareness activities carried out and population reached <i>(Yes/No, number of people, % of females)</i>	Percentage of targeted population aware of predicted adverse impacts of climate change, and of appropriate responses <i>(Scale 5-1 ranging from fully aware to not aware to express awareness)</i>	Quality of and extent to which climate-responsive instruments and investment models are developed and tested <i>(project or program-level qualitative assessment using scorecards)</i>
	Capacities of regional, national and sub-national institutions to identify, prioritize, implement, monitor and evaluate adaptation strategies and measures <i>(Number of institutions and score^b)</i>	Capacity of staff to respond to, and mitigate the impacts of, climate-related events from targeted institutions increased <i>(Number of staff, capacity determined via survey or questionnaire)</i>	Evidence of strengthened government capacity and coordination mechanism to mainstream climate resilience <i>(national-level focused qualitative assessment of a) strengthened government capacity to mainstream climate resilience; and b) strengthened coordination mechanism to mainstream climate resilience with scorecard)</i>
Integration of adaptation into relevant sectoral and development policies, plans and processes	Institutional arrangements to lead, coordinate and support the integration of adaptation into relevant policies, plans and associated processes <i>(score)</i>	Climate change priorities integrated into national development strategy <i>(Scale 5-1 ranging from all (fully-integrated) to none)</i>	Degree of integration of climate change at national level, including sector planning <i>(national-level focused qualitative assessment of relevant strategies, policies, plans and documents with scorecards)</i>
	Regional, national and sector-wide policies, plans and processes developed and strengthened to identify, prioritize and integrate adaptation strategies and measures <i>(number of policies/ plans/ processes and score)</i>	Number, type, and sector of policies introduced or adjusted to address climate change risks	Changes in budget allocations at national and possibly sub-national level of government to take into account effects of climate variability and change <i>(optional)</i>

Kind of Metrics

Expected result	Indicator * = Core (adopted) or Proposed
Paradigm-shift Objective	
Increased climate-resilient sustainable development	<input type="checkbox"/> Degree to which the Fund is achieving a climate-resilient sustainable development impact
Fund-level Impacts	
	<input checked="" type="checkbox"/> Total number of direct and indirect beneficiaries; number of beneficiaries relative to total population
1.0 Increased resilience and enhanced livelihoods of the most vulnerable people, communities and regions	<input type="checkbox"/> 1.1 Change in expected losses of lives and economic assets (US\$) due to the impact of extreme climate-related disasters in the geographical area of the GCF intervention <input type="checkbox"/> 1.2 Number of males and females benefiting from the adoption of diversified, climate-resilient livelihood options (including fisheries, agriculture, tourism, etc.) <input type="checkbox"/> 1.3 Number of Fund-funded projects or programmes that support effective adaptation to fish-stock migration and depletion due to climate change
2.0 Increased resilience of health and well-being, and food and water security	<input checked="" type="checkbox"/> 2.1 Number of males and females benefiting from introduced health measures to respond to climate-sensitive diseases <input checked="" type="checkbox"/> 2.2 Number of food-secure households (in areas and periods at risk of climate change impacts) <input checked="" type="checkbox"/> 2.3 Number of males and females with year-round access to reliable and safe water supply despite climate shocks and stresses
3.0 Increased resilience of infrastructure and the built environment to climate change threats	<input type="checkbox"/> 3.1 Number and value of physical assets made more resilient to climate variability and change, taking into account the human benefits (reported where applicable)
4.0 Improved resilience of ecosystems and ecosystem services	<input type="checkbox"/> 4.1 Coverage and/or scale of ecosystems protected and strengthened in response to climate variability and change <input type="checkbox"/> 4.2 Value (US\$) of ecosystem services generated or protected in response to climate change
Project and Programme Outcomes	
	<input type="checkbox"/> Number of technologies and innovative solutions transferred or licensed to promote climate resilience as a result of Fund support
5.0 Strengthened institutional and regulatory systems for climate-responsive planning and development	<input type="checkbox"/> 5.1 Institutional and regulatory systems that improve the incentives for climate resilience and their effective implementation <input type="checkbox"/> 5.2 Number and level of effective coordination mechanisms
6.0 Increased generation and use of climate information in decision-making	<input type="checkbox"/> Proposed: 6.2 Use of climate information products/services in decision-making in climate-sensitive sectors
7.0 Strengthened adaptive capacity and reduced exposure to climate risks	<input type="checkbox"/> Proposed: 7.1: Use by vulnerable households, communities, businesses and public-sector services of Fund-supported tools, instruments, strategies and activities to respond to climate change and variability <input type="checkbox"/> 7.2: Number of males and females reached by, or total geographical coverage of, climate-related early-warning systems and other risk-reduction measures established and strengthened
8.0 Strengthened awareness of climate threats and risk-reduction processes	<input checked="" type="checkbox"/> 8.1: Number of males and females made aware of climate threats and related appropriate responses

Conference Outcomes

- Information diffusion and raising awareness about new adaptation techniques/projects relating to each of the three sectors and associated monitoring tools,
- Information diffusion and raising awareness about new developments in the area of adaptation metrics,
- Information and outreach about the main findings of the IPCC Special Report on 1.5 degrees, related to adaptation,
- Developing a first stocktake on the needs for adaptation research development in Africa, especially the monitoring tools and metrics,
- Enhanced networking among adaptation techniques and metrics development communities globally,
- Information diffusion about the Adaptation Cluster being developed at UM6P and its objectives and content,
- Capacity building enhancement.

Recommendations

- To have active activity in the areas of adaptation, indicators and determinants of adaptation projects.
- To have a protocol of cooperation with King Mohammed VI University to benefit from their experience in this field.
- The presence of such conferences and training workshops, which opens new horizons for scientific research, which returns to the country of good and benefit is recommended.



Thanks for Your Attention